

## AirCam POE-100HD

### PoE DC Iris 1.3 MegaPixel IP Camera

The PoE-100HD is a MegaPixel degree box type IP camera. Equipped with a 1.3 MegaPixel CMOS sensor, PoE-100HD can provide image resolution up to 1280 x 1024, and gives the user a clearer and more detailed live video for monitoring. Adopting H.264 as one of its video compression method, PoE-100HD supplies an efficient way to save the network bandwidth and storage space. PoE-100HD also supports DC IRIS and C/CS mount lens, and hence extends its usage in most locations, such as lobbies, stores, parking lots or even street corner. PoE-100HD is the best choose for small to large IP surveillance system.



### H.264 Compression

H.264 is a high performing video compression standard that boasts a much higher compression ratio than MJPEG or MPEG-4, drastically reducing file sizes and conserving valuable network bandwidth and storage space. With up to 90% reduction in file size, an 1 MB image can be drastically reduced to as low as 10KB using H.264.



### 1.3 Mega-Pixel Video Quality

AirLive AirCam POE-100HD offer high quality image at maximum 1280x1024 resolution. One of the most compelling advantages of MegaPixel surveillance systems is their ability to capture more details in a frame and at the same time not missing any finer details that are useful for license plate identification and human recognition

\* Red box is standard 640X480 image resolution.  
The POE100HD offer 4 times bigger image size compare to VGA camera.

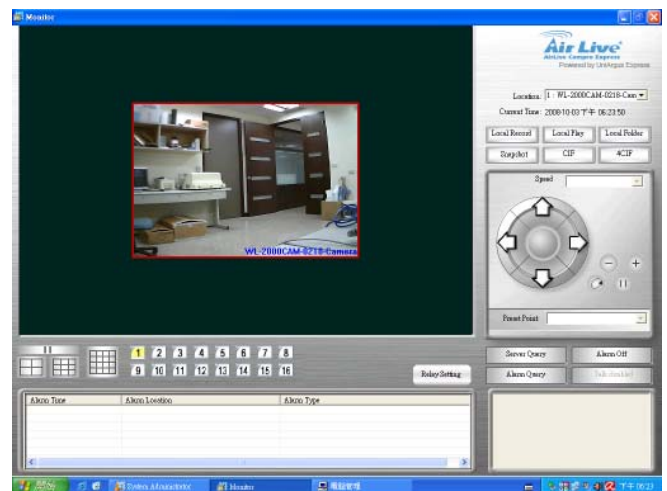
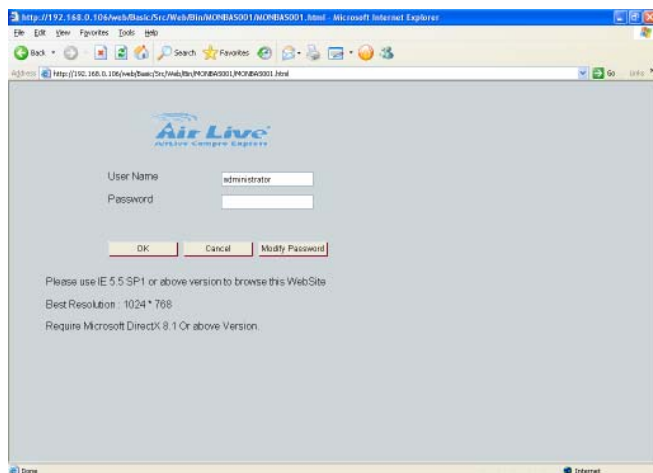
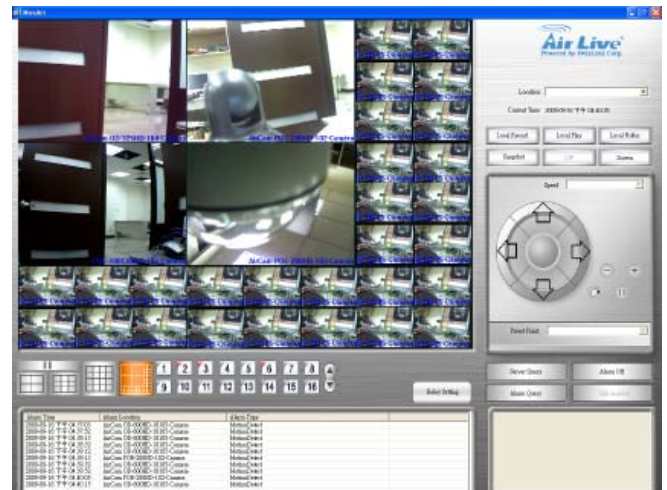
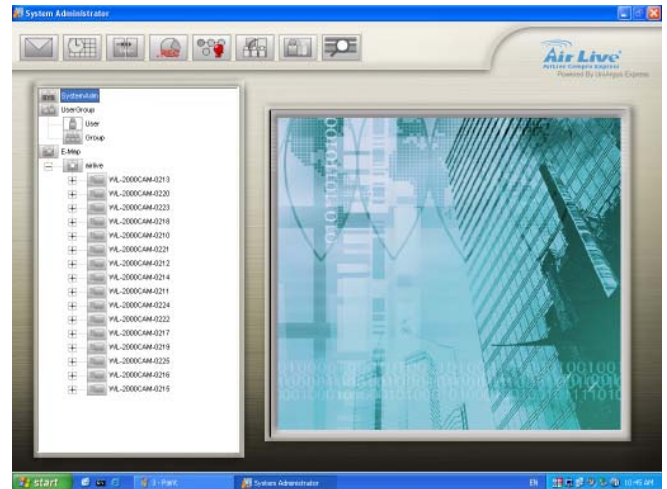
## AirLive CamProExpress

The AirLive CamPro Express supports 32 cameras, providing a fully integrated surveillance and alarm management solution. The AirLive CamPro Express is complete freeware for you to do the centre monitor. You can find this software in the CD or you can download from the support page. The Cam Pro Express support WL-2000CAM, POE-100CAMv2, POE-200CAMv2, OD-300CAM, POE-260CAM, WL-2600CAM, OD-325HD, OD-600HD, POE-250HD, POE-200HD.

- The E-map user interface and intelligent privilege management solves management problems.
- Multiple rotation screens (1/4/9/16/32) provide the most flexible method to monitor your surveillance installation.

## Web Monitor

The CamPro Express allows you to monitor 32 channels via the computer and WEB UI. You can choose how you would like to view the camera, the Cam Pro Express supports 1/4/9/16/32 different view. You can also choose to view the different camera in single view or 1/4/9/16/32 view.



The CamPro Express allows you to monitor 32 channels via the computer and WEB UI. You can choose how you would like to view the camera, the Cam Pro Express supports 1/4/9/16/32 different view. You can also choose to view the different camera in single view or 1/4/9/16/32 view.

## Specifications

### Hardware

#### Image Device

- 1.3 Mega-pixel image sensor

#### Effective Pixels

- 1280 x 1024 pixels

#### Sensitivity

- 1.0V/lux-sec (550nm)

#### Signal to Noise

- 44dB

#### Lens

- F:1.8 ; f:4.3mm, C/CS mount (optional)

#### IRIS Control

- DC IRIS

### IP Module

#### Video

##### Video Encoder

- H.264, MPEG4 and Motion JPEG simultaneously (Tri-encoders)

##### Video Profile

- 11 profiles simultaneously
- H.264 SXGA/ VGA / QVGA / QQVGA
- MPEG4 VGA / QVGA / QQVGA
- M-JPEG SXGA/ VGA / QVGA / QQVGA

##### Frame Rate

- Mega-pixel mode: Up to 15fps for all 11 profiles
- VGA mode: Up to 30fps for all 9 profiles

##### Image Setting

- De-noise
- Brightness, sharpness, contrast text, time and date overlay

### Streaming

- Simultaneously multi-profile streaming
- Streaming over UDP, TCP, or HTTP
- Multicast streaming
- M-JPEG streaming over HTTP
- Supports 3GPP mobile surveillance
- Controllable frame rate and bandwidth
- Constant and variable bit rate (MPEG4 / H.264)

### Audio

#### Audio Encoder

- RTSP: G.711 64kbps, G.726 32kbps
- 3GPP: AMR

#### Audio Streaming

- One-way or two-way

#### Microphone

- Built-in microphone input

#### Audio Output

- Line level out

### Network

#### Supported Protocols

- TCP, UDP, HTTP, HTTPS, SMTP, FTP, NTP, DNS, DDNS, DHCP, ARP, Bonjour, UPnP, RTSP, RTP, RTCP, PPPoE, 3GPP, ICMP, Samba

#### Security

- Password protection, IP address filtering, user access log

#### Users

- 20 simultaneous unicast users
- Unlimited users using multicast

#### Ethernet

- 10/100M auto negotiation

## System Integration

### Application Programming Interface

- Open API for software integration
- SDK

### Alarm Triggers

- Intelligent video motion detection and external input

### Motion Detection

- 10-zone video motion detection

### Alarm Events

- File upload via FTP or email
- File upload to NAS via Samba protocol
- Notification via email, HTTP, and TCP
- External output activation
- Go to PTZ preset position
- Audio alerting output

### Video Buffer

- Pre- and post- alarm buffering

## General

### RAM

- 128MB

### ROM

- 8MB

### Power Supply

- 12V DC external power adapter

### PoE

- IEEE 802.3af

### Power Consumption

- 4W max

### Connectors

- RJ-45 10BaseT/100BaseTX
- DC jack
- 1 alarm input and 1 output
- Audio in/out
- RS485
- Audio out
- DC IRIS

### Indication LED

- Two LEDs

### Protection Class

- Indoor use

### Operating Temperature

- 0°C to 40°C (32°F to 104°F)

## Software

### Search & Installation

- IPWizard-2

### Bundled Program

- Cam Pro express 32 Channels Surveillance System

## Ordering Information:

**AirCam POE-100HD**     H.264 1.3 MegaPixel POE Dome